

# SAME TULSA POST INDUSTRY DAY 16 JUNE 2026

**Patrick S. Beard**

USACE Tulsa District

Chief MIL/IIS programs

Programs and Project Management (DPM)



## District Overview and Future Work



US Army Corps  
of Engineers®



# THE TULSA DISTRICT

operates in

**3 STATES**

- ➔ KANSAS
- ➔ OKLAHOMA
- ➔ TEXAS

contains

**4 MAJOR RIVER BASINS**

- ➔ CANADIAN
- ➔ GRAND NEO SHO
- ➔ ARKANSAS
- ➔ RED RIVER

manages

**38 PROJECTS** **50 DURING FLOODING**

maintains & operates

MKARN'S NAVIGATION CHANNEL

RIVER MILES

**140**

prevented

**29.6B FLOOD DAMAGE PREVENTED**

within district

**39 FEDERALLY RECOGNIZED NATIVE AMERICAN TRIBES**

executes

**\$900M+ FEDERAL BUDGET (FY 2025)**

employs

**799 people**

missions

- 11**
  - ➔ Emergency Operations & Disaster Response
  - ➔ Regulatory
  - ➔ Navigation
  - ➔ Water Supply
  - ➔ Hydropower
  - ➔ Civil Works
  - ➔ Military Program
  - ➔ Dam Safety
  - ➔ Flood Risk Management
  - ➔ Environmental Stewardship
  - ➔ Recreation

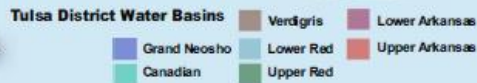
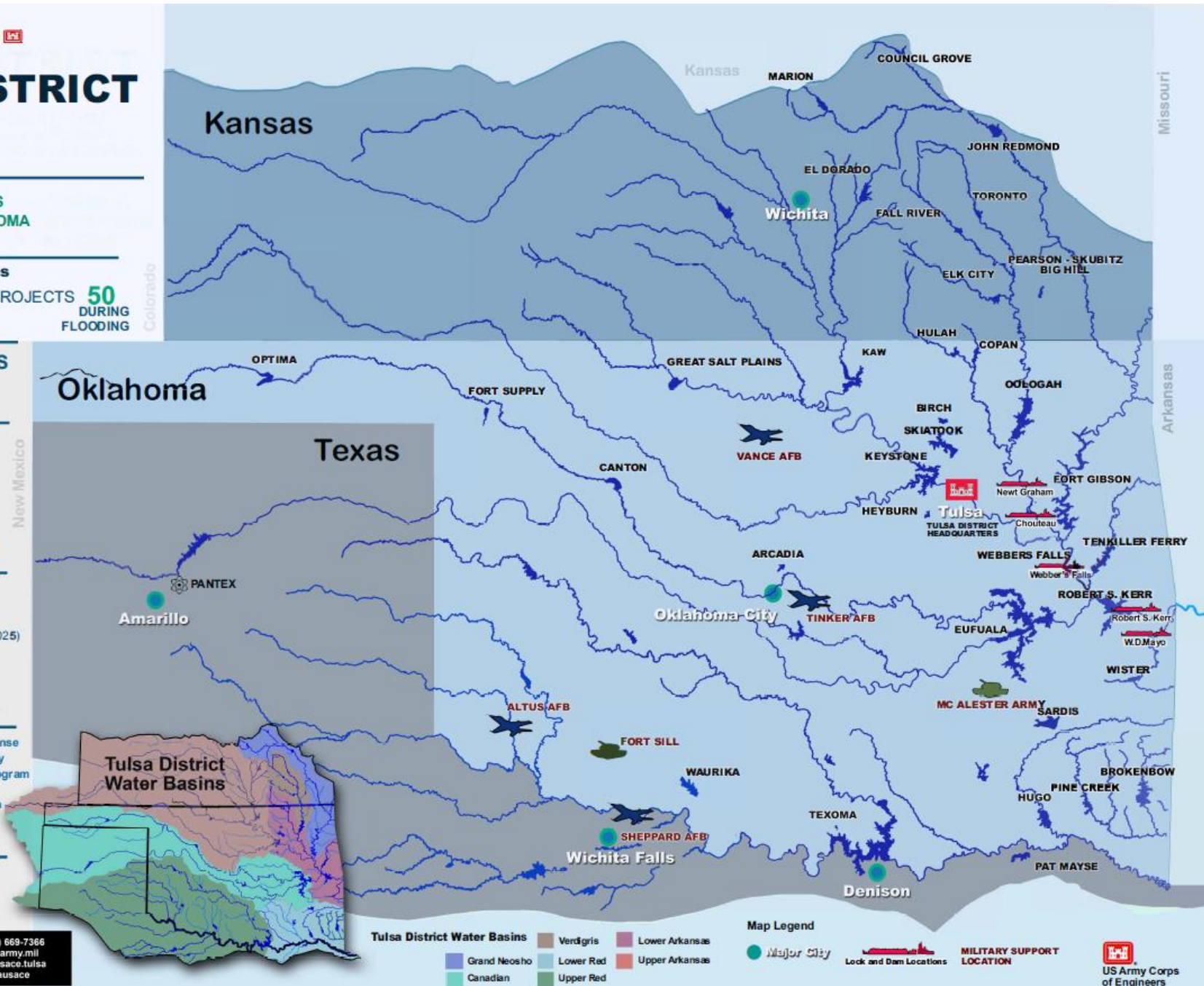
Tulsa District creates more than **\$787,000,000** in economic benefits for the region

COL Jessica Goffena  
Commander Tulsa District



U.S. Army Corps of Engineers  
Tulsa District  
2438 E 91st Street  
Tulsa, Oklahoma 74137

Contact us (918) 689-7366  
www.swl.usace.army.mil  
facebook.com/usace.tulsa  
twitter.com/tulsasauce



Map Legend

Major City

Lock and Dam Locations

MILITARY SUPPORT LOCATION

US Army Corps of Engineers



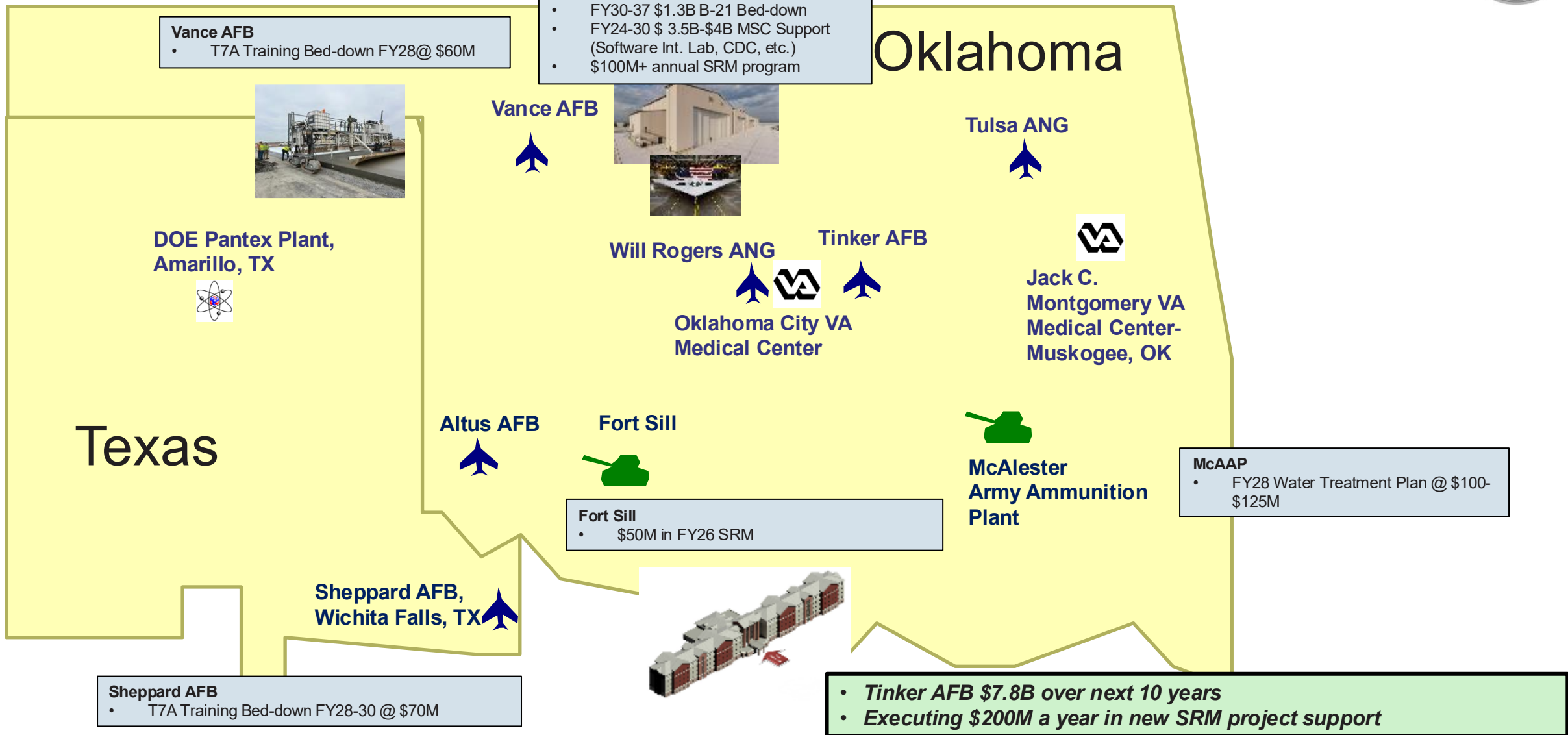
# BASE ACQUISITION TOOLS



- \$495M SB-UR Design Build Construction MATOC
  - Awarded 25 July 2025
  - Adding (on-boarding) up to four (4) UR firms, Sources Sought has closed
    - Virtual Industry upcoming and will be posted on SAM.gov - broad scope both MIL & Civil
- \$499M AE General Services
  - In Planning Phase, anticipating synopsis FY27
- \$99M Industrial Roof Construction MATOC
  - In Planning Phase, anticipating synopsis early FY27 (replacement of existing \$80M tool)



# TULSA DISTRICT MILITARY AND INTERAGENCY SUPPORT





# MILITARY CONSTRUCTION



Location	Requirement	ROM	Strategy	Advertise	Award
Tinker AFB	Child Development Center	\$40-\$50M	C - UR	Q4 FY26/ Q1 FY27	Q3 FY27
Tinker AFB	Bomber Agile Common Hangar	\$225-\$250M	C-UR	Q2 FY26	Q3 FY26
Tinker AFB	E-7 Squad Ops	\$80-\$100M	C-UR	Q4 FY27	Q2 FY28
Tinker AFB	Integrated Capability Oxygen Facility	\$70-\$80M	C-UR	Q1 FY28	Q2 FY28
Vance AFB	T-7A Hush House Pad	\$3-\$7M	DBB-SB	Q1 FY28	Q2 FY28
Vance AFB	T-7A Allied Support	\$15-\$20M	DBB	Q1 FY28	Q2 FY28
Vance AFB	T-7A Egress Shop Addition	\$2-\$4M	DBB-SB	Q1 FY28	Q2 FY28
FT Sill	School Age Center	\$20-\$25M	DBB	Q1 FY28	Q2/Q3 FY28

- MILCON acquisition strategy based on complexity
- SWT does not maintain LB Construction IDIQs for MILCON – normally competed
- Less complex discrete projects set aside-negotiated IDIQ, or competed
- Subcontracting performance is carefully tracked

Ft Sill  
TRADOC  
Mission

AF T-7A  
Program in  
development  
for Sheppard  
and Vance  
AFB

Tinker AFB  
KC46A & B21  
Program  
\$4B-\$7B/  
10 years

See SWT Forecast for other projects



# MILITARY CONSTRUCTION – CONT.



Location	Requirement	ROM	Strategy	Advertise	Award
Sheppard AFB	T-7A Allied Support	\$1-\$3M	DBB-SB	Q1FY27	Q3 FY27
Sheppard AFB	T-7A Ground Base Training ADAL	\$30-\$40M	C-UR	Q1FY28	Q2 FY28
Sheppard AFB	T-7A Hangar/UMT	\$60-\$70M	C-UR	Q1FY28	Q2 FY28
Sheppard AFB	T-7A Ramp Expansion	\$12-\$17M	DBB-SB	Q1FY28	Q3 FY28
FT Sill	ADA Indirect Fire Protection Instructional Facility	\$30-\$40M	C-UR	Q4 FY27	Q2 FY28
Vance AFB	Undergraduate Pilot Training Center	\$80-\$90M	C-UR	Q1 FY28	Q2 FY28



# MILITARY CONSTRUCTION – CONT.



Location	Requirement	ROM	Strategy	Advertise	Award
Tinker AFB	2-Bay Corrosion Control Hangar	\$300M-330M	C-UR	Q1FY28	Q2 FY28
Tinker AFB	2-Bay MX Hangar w/ 2-story admin	\$120M-\$140M	DB-UR	Q1FY28	Q2 FY28
Tinker AFB	2-Bay MX Hangar	\$120M-\$135M	DB-UR	Q1FY28	Q2 FY28
Tinker AFB	Supporting Shops and Staging Building	\$20M-\$30M	DB-UR	Q1FY28	Q2 FY28
Altus AFB	2X Flight Simulator (ADD/ADLTER)	\$15M-\$20M	DB	Q1FY28	Q2 FY28
Altus AFB	1-Bay MP Hangar	\$95M-\$105M	DB-UR	Q1FY28	Q2 FY28
Altus AFB	1-Bay Maintenance Hangar	\$95M-\$105M	DB-UR	Q1FY28	Q2 FY28



# SUSTAINMENT, RENOVATION, MODERNIZATION



## - Access

- Most SRM requirements awarded through existing IDIQs
- Reputation gained through local experience important
- Build experience
  - Teaming and Subcontracting
  - Other federal and installation contracts
  - Civil-Works Projects
- 8a, HUBzone, WOSB, SDVOSB designation; discriminators that tip the scale

## - Future Work

- Total FY27 Expected SRM **\$150-200M (Ft Sill/ Tinker)**
- Tinker AFB SRM program focused on industrial process



# Tulsa District: Civil Works Studies, Construction, O&M Projects



### Keystone Lake Dam Safety PED

- Total Cost: \$416M
- 100% Federal Cost
- Dam Safety modification in design

### Tulsa West Tulsa Levees

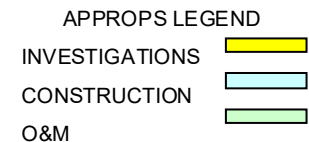
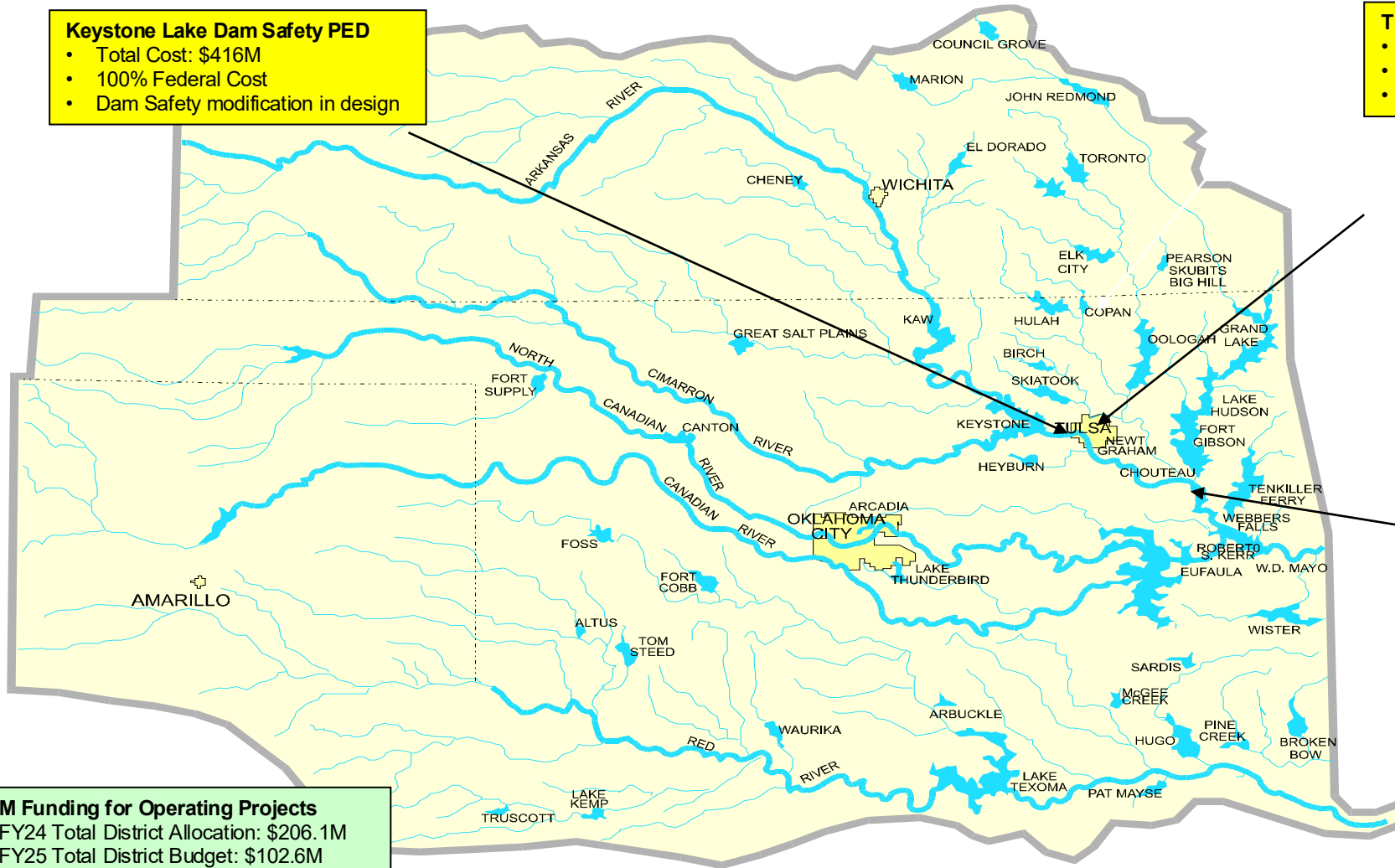
- Total Cost: \$191M
- PED underway
- Initial construction award in FY27

### McClellan-Kerr Arkansas River Navigation System

- \$50M per year for system maintenance costs, \$552M of current identified repairs
- \$8.2B over next 30-40 years to replace critical items to extend system life above yearly O&M costs

### O&M Funding for Operating Projects

- FY24 Total District Allocation: \$206.1M
- FY25 Total District Budget: \$102.6M





# CIVIL WORKS (O&M MAINTENANCE)



## – Access

- Often open competed contracts due to specialized work
- Especially important to respond to Sources Sought due to lower volume of contractors in CW
- Team with specialists whose experience closely matches requirement
- Smaller CW projects (typically under \$250K) required annually (Q3-Q4 Awards)

## – Future Work

Location	Requirement	ROM	Advertise
Skiatook Lake	Wet Well Gates Rehabilitation	\$3M - \$4M	Q4 FY26
Skiatook Lake	Bridge Abutment Protection	\$1M - \$1.5M	Q4 FY26
Arcadia Lake	Gate Rehabilitation	\$3M - \$4M	Q4 FY26
Midwest City	Water Infrastructure	\$12M - \$15M	Q4 FY26
Tenkiller Lake	Fabricate and Install Service Gates	\$1.5M - \$3M	Q1 FY27
Council Grove Lake	Remediate Lead Based Paint & Repaint Service Bridge	\$2M - \$4M	Q1 FY27



# CIVIL WORKS (HYDROPOWER)



## – Access

- Often open competed contracts due to specialized work
- Especially important to respond to Sources Sought due to lower volume of contractors in CW
- Team with specialists whose experience closely matches requirement

## – Future Work

Location	Requirement	ROM	Advertise
Tenkiller	15kV Cable and Station Serv Sys Repl	\$5M - \$7M	Q4 FY26
Webbers Falls	U2 Speed Increaser Rehab	\$11M - \$13M	Q4 FY27
Eufaula	Generator Rewind	\$27M - \$30M	Q3 FY27
Denison	Penstock+Expansion Joint+DrainValve Repair	\$5M - \$7M	Q2 FY28
Keystone	Unit 2 Penstock Expansion Joint Repair	\$1.5M - \$3M	Q2 FY30
Keystone	Turbine Rehab (2 units)	\$79M - \$82M	Q3 FY30



# CIVIL WORKS SERVICE PROJECTS



- Project Offices at lakes use revolving service contracts for Mowing, Janitorial, Park Cleaning, Debris Removal etc. This is a good way to gain experience with the district as stepping stone to other work
  
- Access – Work with SB Coordinator and PTACs
  - Who are the POCs? Operation Project Managers, Lake Managers
  - When will the cycle (1+4) on that contract come available? Normally all awarded by end of 2<sup>nd</sup> QTR
  - Where is the work; go visit site and ask questions
  - How will it be advertised? SB set-aside for all work under \$250k
  - Talk to OBAN/PTAC who can help you research a fair and reasonable bid price based on previous contract awards
  - Carefully read through the solicitation
  - Talk to SB Deputy and Lake Managers
  
- Current Capacity
  - Typically do not use IDIQ contract for area service requirements
  
- Future Work – check [sam.gov](http://sam.gov)



# CIVIL WORKS SERVICE PROJECTS (CONT'D)



Location	Requirement	Solicitation #	Anticipated Solicitation Open Dates
Wister Lake, OK	Herbicide Services	W912BV26XXXX	10-Feb-26
Broken Bow, Keystone, Ft. Gibson Powerhouse, OK	CCTV equipment and install	W912BV26XXXX	01-Feb-26
Tenkiller Ferry Lake – Webbers Falls Lake, OK	Park Cleaning Services	W912BV26QA019	02-Feb-26
Toronto Lake, KS	Park Cleaning Services	W912BV26XXXX	05-Feb-26
John Redmond Lake, KS	Debris Removal	W912BV26QCD01	09-Feb-26
Ft. Gibson Lake, OK	Mowing Services	W912BV26XXXX	20-Feb-26
Hugo, Broken Bow, Pine Creek Lakes	Herbicide Services	W912BV26XXX	16-Mar-26
Pine Creek Lake, OK	Janitorial Services	W912BV26Q0026	02-Feb-26
Fall River and Toronto Lakes, KS	Mowing Services	W912BV26XXXX	01-Feb-26
Hugo and Pine Creek Lakes, OK	Refuse Services	W912BV26XXXX	01-Feb-26